

Hoddesdon Energy

Client: BOUYGUES

Location: Hoddesdon

Start Date: June 2021

Outline Scope:

- Remove 16 soot blower and replace with new steel work.
- SPG'S on 2 Streams (8 per stream).

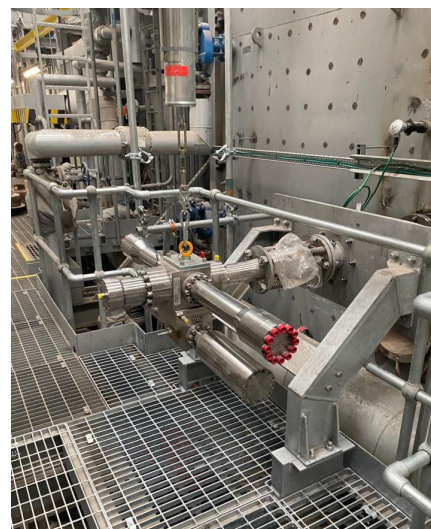


Client Overview

BOUYGUES new biomass plant will improve waste management efficiency in the UK by reducing volumes sent to landfill. More than 90,000 tonnes of waste to be used as fuel and generated by the local commercial and industrial sectors will be supplied by two of the UK's leading waste suppliers. The plant will generate 10 MWe of power. This represents a yearly net supply of green electricity to the grid of 76,000 MWh, enough to meet the needs of around 7,000 households. This is the largest waste-to-energy gasification plant in the UK.

Project Scope

- Undertake site surveys/measurements & provide engineering design of structural support elements and secondary steelwork.
- Manufacture and supply the front and rear support elements and secondary steelwork to BSEN 1090
- Allowance of fabricated steelwork as per the 'T12' Design drawings, subsequently approved for construction
- Disconnect the soot blower pipework to sixteen (16) soot blowers
- Make steam pipe modifications - essentially cap off soot blower supplies
- Remove sixteen soot blowers down to scrap using rigging equipment.
- Mechanical installation of six SPG's on the new support steels
- Create a new opening in the refractory wall and core drill to correct diameter.
- Install new working platforms for limited access to each of the SPG units
- Modification of existing handrails on edge of gantry to provide constant railing and removable sections to allow SPG's to be withdrawn away from the boiler



Our Results

This was a major turnkey project for PJD requiring design, procurement, fabrication and co-ordination from our project partners, KRR, T12, and BUSA. The site team carried out the install within 24 days working 12hrs per day.

Key Performance Indicators

PJD successfully executed the works on time and within budget, maintaining the highest of health and safety standards whilst working to ensure minimal disruption to BOUYGUES day-to-day operation. The completed works will improve the overall efficiency at the facility enabling BOUYGUES to continue providing a reliable service to its customers.